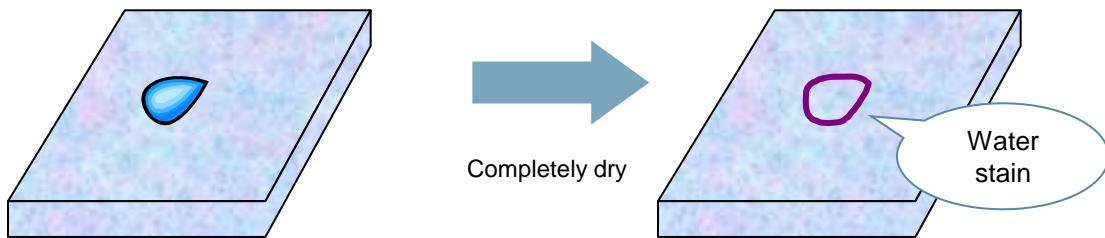


The information contained here is intended to provide the recommended cleaning method for water stains on the surface of Staron® and Radianz® installation.

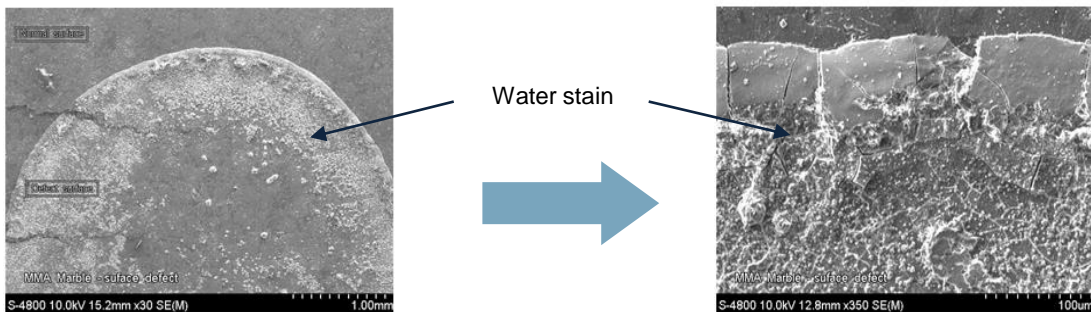
## 1. Test procedures and result

- ① The evaporation of hard water on Staron® & Radianz® leaves behind mineral 'Water Stain'. Compared to Staron® & Radianz®, natural stone surface tends to absorb them which is considerably undetectable.



## 2. The ingredients of water spot

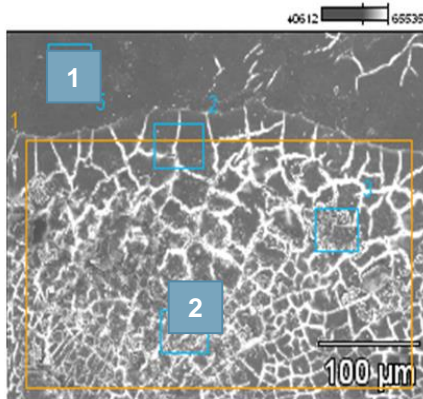
- ① Through examining the water spot under a SEM (Scanning Electron Microscope), various fine-particles were found on the surface of Staron®.



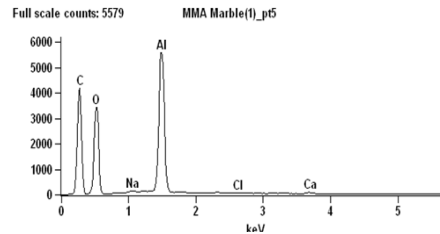
This Technical Bulletin is intended to provide guidelines for optimal fabrication, installation, and performance of LOTTE ADVANCED MATERIALS products mentioned. Though the information contained herein is deemed reliable, none of the contents--including but not limited to the instructions, techniques, graphics, and recommendations--is to be understood as implying legal liability of fitness for a specific purpose, any other type of warranty, or being complete or absolute in its range and nature of information.

Depending on the user's particular application, all necessary measures must be taken to verify and test the adequacy for such needs or application. Any information or recommendation herein is strictly for purposes of reference and as such, LOTTE ADVANCED MATERIALS assumes no responsibility for its suitability or accuracy or the use of such information for products other than LOTTE ADVANCED MATERIALS Staron® solid surfaces & Radianz® quartz surfaces.

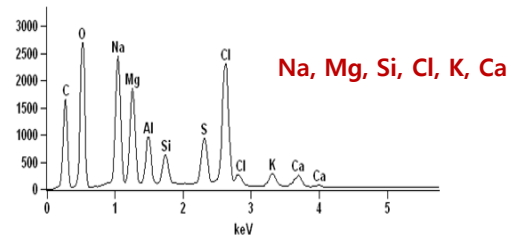
- ② Through analyzing these particles under EDS (Energy Dispersive Spectroscopy), they were identified as inorganic materials.



1



2



### 3. The reason why inorganic particles are in the water

Although drinking water is filtered by the water purifier, most inorganic particles in water are small enough to pass through the water purifier. Since the tap water especially contains  $\text{CaCO}_3$  in Europe and USA, water stains can be highly visible if they are left and dried on the surface of product.

### 4. How to remove the water stain

① Everyday cleaning

- Wipe up spills immediately with soft cloth or paper towels.

② Water stain

- Minor water stain : Rinse several times with warm water and dry with a soft cloth
- Major water stain : Use an abrasive plastic pad or rough sandpaper, and Lime-scale remover.

**Note:** Scrubbing too aggressively may actually leave scratches or reduce the gloss level.

This Technical Bulletin is intended to provide guidelines for optimal fabrication, installation, and performance of LOTTE ADVANCED MATERIALS products mentioned. Though the information contained herein is deemed reliable, none of the contents--including but not limited to the instructions, techniques, graphics, and recommendations--is to be understood as implying legal liability of fitness for a specific purpose, any other type of warranty, or being complete or absolute in its range and nature of information.

Depending on the user's particular application, all necessary measures must be taken to verify and test the adequacy for such needs or application. Any information or recommendation herein is strictly for purposes of reference and as such, LOTTE ADVANCED MATERIALS assumes no responsibility for its suitability or accuracy or the use of such information for products other than LOTTE ADVANCED MATERIALS Staron® solid surfaces & Radianz® quartz surfaces.